



emotion

Settings that delight

The extraordinary design of the *Emotion* collection plays out in the formal aesthetic of natural curves combined with linear basic forms. The pieces swing in the rhythm of the theme, sometimes smoothly and gently and sometimes to dynamic heights. Laid out together, the platters form an elegant planar structure and create an attractive bridge to other pieces from the collection. *Emotion* supports the presentation of the food, both subtly and confidently. A mesmerizing setting for an emotionally appealing buffet presentation.

Design: Ottenwälder und Ottenwälder, 2011

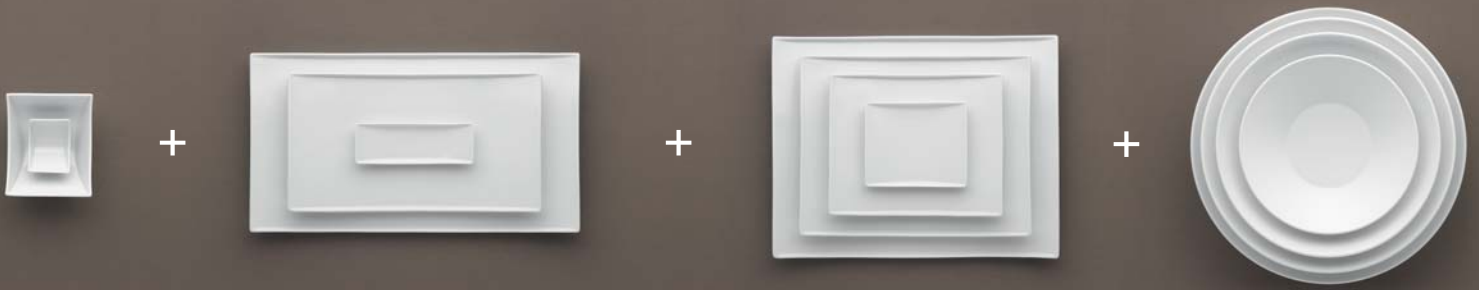


Appealing presentation

Emotion's lively design underscores gastronomic creativity and is an appetizing way to showcase the culinary delights of any buffet. The emotive presentation of food invites guests to help themselves.

High-quality melamine presenters enhance the presentation on multiple levels.





Creative diversity

Let your imagination run free: With the various porcelain pieces from the *Emotion* collection, you can create diverse buffet landscapes. No matter how the individual elements are combined – rounded and angular, deep and flat, austere linear and gently curved shapes coalesce into a modern overall picture. The varied sizes of the pieces provide the right combination for every occasion and plenty of room for inventive presentation of any sort of buffet.





Standard doesn't mean ordinary

The design of the Gastronorm trays gracefully reflects the typical curves of the *Emotion* collection. The unique line of the inner contour combines aesthetics with the functionality of handles. The standardized shape provides all the functional requirements for a smooth use. Bauscher GN trays fit into a variety of chafing dishes, are ovenproof and stand out for their efficient heat and cold retention capacity – a winning combination of design, function and quality.



Quality Made in Germany

From expansive buffet presentations down to a single piece on the table – the uses for the *Emotion* collection are virtually unlimited. Furthermore, each individual piece effortlessly handles the challenges of the rigorous gastronomy workload. For Bauscher, quality has been the most important criteria for all products since the company was founded in 1881. Bauscher uses energysaving and resource-conserving processes to manufacture its extremely durable hard porcelain, which meets the highest standards for functionality: professional porcelain Made in Germany.





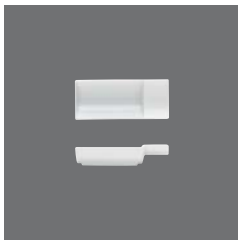
Limitless expansion

Antipasti or dessert variations, flying buffet or served at the table – the emotionally appealing design of the *Emotion* collection offers an exceptional setting for special food compositions. A harmonious atmosphere is generated by only looking at the “smile” of the porcelain items which is based on their differently shaped curves. Through combination with other successful Bauscher collections, this setting can be expanded in a variety of ways, with no limits on creativity. *Emotion* – for settings that delight.



The elegant wood presenter forms the backdrop for small, delicate food creations.

Bezeichnung	Bestell-Nr.	Inhalt I	Durchmesser mm	Höhe 1/11 Stück mm	Gewicht g
Article	Order No.	Volume (fl. oz.)	Diameter (inch)	Height 1/11 pieces	Weight
Description	Code	Contenance	Dimensions	Hauteur 1/11 pièces	Poids
Descripción	Nº pedido	Contenido	Diámetro	Altura por 1/11 piezas	Peso
Descrizione	Numero ordine	Contenuto	Diametro	Altezza al 1/11 pezzi	Peso



Starter, Starter,
Coupelle, Platito tapa, Coppetta per fingerfood

> Starter 14x6	93 6114	0,03 (1.01)	147x61 (5.79x2.40)	34/150	135
----------------	---------	-------------	--------------------	--------	-----



Appetizer, Appetizer Dish,
Cuillère amuse-bouche, Platito tapa, Coppetta per fingerfood

> Appetizer 15x4	93 2615	-	148x41 (5.83x1.61)	24-42/-	80
------------------	---------	---	--------------------	---------	----



Platte rechteckig, Platter rectangular,
Plat rectangulaire, Fuente rectangular, Piatto rettangolare

> Platte rechteckig mini 17x6	93 2617	-	168x59 (6.61x2.32)	24/136	135
> Platte rechteckig 36x20	93 2336	-	359x199 (14.13x 7.83)	36/246	1400
> Platte rechteckig 47x26	93 2347	-	470x258 (18.50x10.16)	36/257	2520



Platte rechteckig, Platter rectangular,
Plat rectangulaire, Fuente rectangular, Piatto rettangolare

> Platte quadratisch mini 14x12	93 2614	-	144x120 (5.67x4.72)	24/152	250
> Platte rechteckig 24x20	93 2324	-	244x201 (9.61x 7.91)	36/225	955
> Platte rechteckig 32x26	93 2332	-	320x257 (12.60x10.12)	36/-	1700
> Platte rechteckig 40x32	93 2340	-	404x323 (15.91x12.72)	36/-	2680



Bowl, Bowl,
Bol, Bowl, Coppetta

> Schale mini 7x6	93 6107	0,03 (1.01)	76x60 (2.99x2.36)	46/-	85
> Bowl 14x12	93 5714	0,40 (13.43)	146x120 (5.75x4.72)	75/264	435



Schale rund, Dish round,
Bol rond, Bowl redondo, Coppetta rotonda

> Schale rund Ø 24	93 3174	1,90 (64.25)	240 (9.45)	95/265	1180
> Schale rund Ø 30	93 3180	3,70 (125.11)	300 (11.81)	110/290	1970
> Schale rund Ø 34	93 3184	-	-	-	-

emotion

Bezeichnung	Bestell-Nr.	Inhalt I	Durchmesser mm	Höhe 1/11 Stück mm	Gewicht g
Article	Order No.	Volume (fl. oz.)	Diameter (inch)	Height 1/11 pieces	Weight
Description	Code	Contenance	Dimensions	Hauteur 1/11 pièces	Poids
Descripción	Nº pedido	Contenido	Diámetro	Altura por 1/11 piezas	Peso
Descrizione	Numero ordine	Contenuto	Diametro	Altezza al 1/11 pezzi	Peso



Schale rund, Dish round,
Bol rond, Bowl redondo, Coppetta rotonda

> Schale rund Ø 38	93 3188	-	-	-	-
--------------------	---------	---	---	---	---



Gastronorm-Schale 1/1, Gastronorm tray 1/1,
Plat gastronorm 1/1, Bandeja gastronorm 1/1, GN-coppa 1/1

> GN-Schale 1/1 - 20	93 2601	-	530x325 (20.87x12.80)	22/-	3040
> GN-Schale 1/1 - 65	93 2602	7,0 (236.70)	530x325 (20.87x12.80)	66/-	4260



Gastronorm-Schale 1/2, Gastronorm tray 1/2,
Plat gastronorm 1/2, Bandeja gastronorm 1/2, GN-coppa 1/2

> GN-Schale 1/2 - 20	93 2603	-	325x265 (12.80x10.43)	23/190	1670
> GN-Schale 1/2 - 65	93 2604	3,0 (101.44)	325x265 (12.80x10.43)	65/-	2200
> GN-Schale 1/2 - 100	93 2605	-	325x265 (12.80x10.43)	-	-



Gastronorm-Schale 1/3, Gastronorm tray 1/3,
Plat gastronorm 1/3, Bandeja gastronorm 1/3, GN-coppa 1/3

> GN-Schale 1/3 - 65	93 2606	1,75 (59.17)	325x175 (12.80x6.89)	68/435	1710
> GN-Schale 1/3 - 100	93 2607	2,80 (94.68)	325x175 (12.80x6.89)	105/-	2190



Gastronorm-Schale 2/4, Gastronorm tray 2/4,
Plat gastronorm 2/4, Bandeja gastronorm 2/4, GN-coppa 2/4

> GN-Schale 2/4 - 20	93 2608	-	530x165 (20.87x6.50)	21/-	1565
> GN-Schale 2/4 - 65	93 2609	-	-	-	-



Presenter Kunststoff, Presenter melamine,
Plateau rectangulaire plastique, Bandeja rectangular plástica, Vassoio rettangolare sintetico

> Presenter Kunststoff, stapelbar	93 7941	-	408x178 (16.06x7.01)	42/-	930
-----------------------------------	---------	---	----------------------	------	-----

Presenter Holz, Presenter wood,
Plateau rectangulaire bois, Bandeja rectangular maderá, Vassoio rettangolare legna

> Presenter Holz* (ohne Abbildung)	93 7940	-	408x168 (16.06x6.61)	41/-	806
---------------------------------------	---------	---	----------------------	------	-----



Presenter Kunststoff groß, Presenter melamine big,
Plateau rectangulaire plastique grande, Bandeja rectangular, plástica grande, Vassoio rettangolare sintetico grande

> Presenter Kunststoff groß, stapelbar	93 7942	-	500x295 (19.69x11.61)	107/-	2300
--	---------	---	-----------------------	-------	------

Bezeichnung	Bestell-Nr.	Inhalt	Durchmesser mm	Höhe 1/11 Stück mm	Gewicht g
Article	Order No.	Volume (fl. oz.)	Diameter (inch)	Height 1/11 pieces	Weight
Description	Code	Contenance	Dimensions	Hauteur 1/11 pièces	Poids
Descripción	Nº pedido	Contenido	Diámetro	Altura por 1/11 piezas	Peso
Descrizione	Numero ordine	Contenuto	Diametro	Altezza al 1/11 pezzi	Peso



Korb Kunststoff rechteckig, Basket plastic rectangular,
Panier plastique rectangulaire, Cesta plástica rectangular, Cestino sintetico rettangolare

> Korb Kunststoff rechteckig, klein, natur	93 7950	-	230x200 (9.06x7.87)	70	183
> Korb Kunststoff rechteckig, groß, natur	93 7960	-	430x270 (16.93x10.63)	100	295



Korb Kunststoff rund, Basket plastic round,
Panier plastique rond, Cesta plástica redondo, Cestino sintetico rotondo

> Korb Kunststoff rund Ø 18, schwarz	93 7970	-	180 (7.09)	10/-	62
> Korb Kunststoff rund Ø 25, schwarz	93 7980	-	250 (9.84)	12/-	112
> Korb Kunststoff rund Ø 37, schwarz (ohne Abbildung)	93 7990	-	370 (14.57)	9/-	302

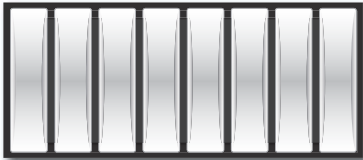
Maximalbestückung Presenter 93 7941, 93 7940

Maximum configuration Presenter 93 7941, 93 7940

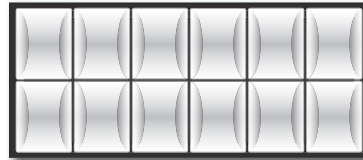
Équipement maximum Plateau 93 7941, 93 7940

Equipamiento máximo Bandeja 93 7941, 93 7940

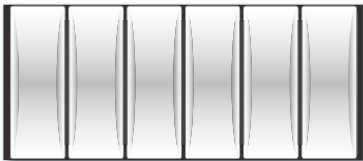
Equipaggiamento massimo Vassoio 93 7941, 93 7940



8 x
Appetizer
93 2615



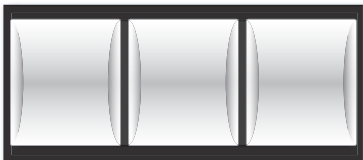
12 x
Schale mini
93 6107



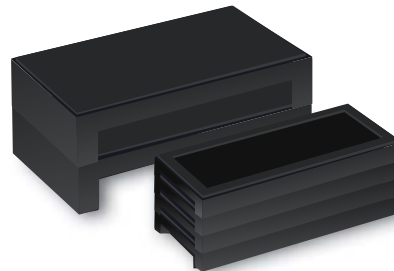
6 x
Platte rechteckig mini
93 2617



6 x
Starter
93 6114

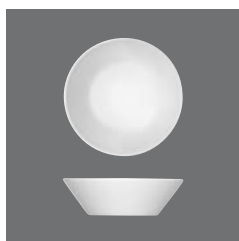


3 x
Platte quadratisch mini
93 2614



Presenter Kunststoff in zwei Ausführungen, stapelbar.
Presenter melamine in two designs, stackable.

Ergänzungsartikel	Bezeichnung	Bestell-Nr.	Inhalt I	Durchmesser mm	Höhe 1/11 Stück mm	Gewicht g
Fitting articles	Article	Order No.	Volume (fl. oz.)	Diameter (inch)	Height 1/11 pieces	Weight
Accessoires correspondants	Description	Code	Contenance	Dimensions	Hauteur 1/11 pièces	Poids
Artículos complementarios	Descripción	Nº pedido	Contenido	Diámetro	Altura por 1/11 piezas	Peso
Articoli accessori	Descrizione	Numero ordine	Contenuto	Diametro	Altezza al 1/11 pezzi	Peso



Options / Schale rund, Bowl round,
Saladier rond, Bowl redondo, Coppetta rotondo

> Schale rund 14	71 3014	0,32 (10.82)	141 (5.55)	43/129	200
> Schale rund 16	71 3016	0,51 (17.25)	165 (6.50)	48/120	270



Options / Teller flach coup rund, Plate flat coup round,
Assiette plate coupe ronde, Plato llano coupe redondo, Piatto piano coup rotondo

> Teller flach coup rund 15	71 1215	-	150 (5.91)	17/105	184
> Teller flach coup rund 20	71 1220	-	202 (7.95)	17/ 93	340
> Teller flach coup rund 26	71 1226	-	261 (10.28)	20/117	696
> Teller flach coup rund 28	71 1228	-	281 (11.06)	23/128	835
> Teller flach coup rund 32	71 1232	-	318 (12.52)	24/129	1070



Options / Teller tief coup rund, Plate deep coup round,
Assiette creuse coupe ronde, Plato hondo coupe redondo, Piatto fondo coup rotondo

> Teller tief coup rund 18	71 1318	0,52 (17.58)	180 (7.09)	46/150	360
> Teller tief coup rund 24	71 1324	1,00 (33.81)	239 (9.41)	45/137	585
> Teller tief coup rund 30	71 1330	1,70 (57.48)	302 (11.89)	51/157	945



Måtre / Teller flach breite Fahne, Plate flat with wide rim,
Assiette plate avec aile large, Plato llano con ala ancha, Piatto piano con falda larga

> Teller flach breite Fahne 16	70 0616	-	161 (6.34)	16/ 95	220
> Teller flach breite Fahne 19	70 0619	-	191 (7.52)	19/115	330
> Teller flach breite Fahne 21	70 0621	-	211(8.31)	20/120	405
> Teller flach breite Fahne 24	70 0624	-	241 (9.49)	22/127	560
> Teller flach breite Fahne 26	70 0626	-	262 (10.31)	22/115	620
> Teller flach breite Fahne 28	70 0628	-	282 (11.10)	23/125	760
> Teller flach breite Fahne 32	70 0632	-	319 (12.56)	25/145	1090



Måtre / Teller tief breite Fahne, Plate deep with wide rim,
Assiette creuse avec aile large, Plato hondo con ala ancha, Piatto fondo con falda larga

> Teller tief breite Fahne 16	70 0716	0,09 (3.04)	161 (6.34)	31/150	275
> Teller tief breite Fahne 20	70 0720	0,19 (6.42)	200 (7.87)	35/140	385
> Teller tief breite Fahne 25	70 0725	0,38 (12.85)	252 (9.92)	44/150	700
> Teller tief breite Fahne 28	70 0728	0,47 (15.89)	284 (11.18)	45/155	845



Enjoy / Teller flach rund Fahne, Plate flat round with rim,
Assiette plate ronde avec aile, Plato llano redondo con ala, Piatto piano rotondo con falda

> Teller flach rund Fahne 16	92 0016	-	161 (6.34)	21/105	225
> Teller flach rund Fahne 23	92 0023	-	228 (8.98)	22/115	490
> Teller flach rund Fahne 26	92 0026	-	262 (10.31)	24/120	665
> Teller flach rund Fahne 28	92 0028	-	279 (10.98)	25/130	770
> Teller flach rund Fahne 32	92 0032	-	320 (12.60)	24/130	1130



Enjoy / Teller tief rund Fahne, Plate deep round with rim,
Assiette creuse ronde avec aile, Plato hondo redondo con ala, Piatto fondo rotondo con falda

> Teller tief rund Fahne 16	92 0116	0,08 (2.71)	161 (6.34)	37/145	270
> Teller tief rund Fahne 24	92 0124	0,30 (10.14)	241 (8.43)	46/160	610
> Teller tief rund Fahne 28	92 0128	0,50 (16.91)	281 (11.06)	47/155	810